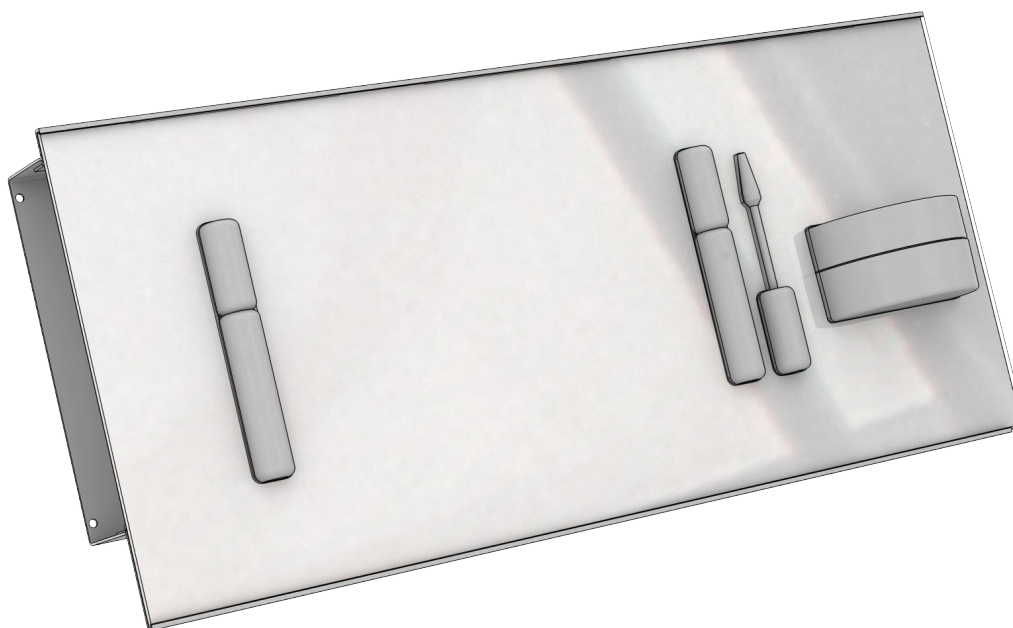
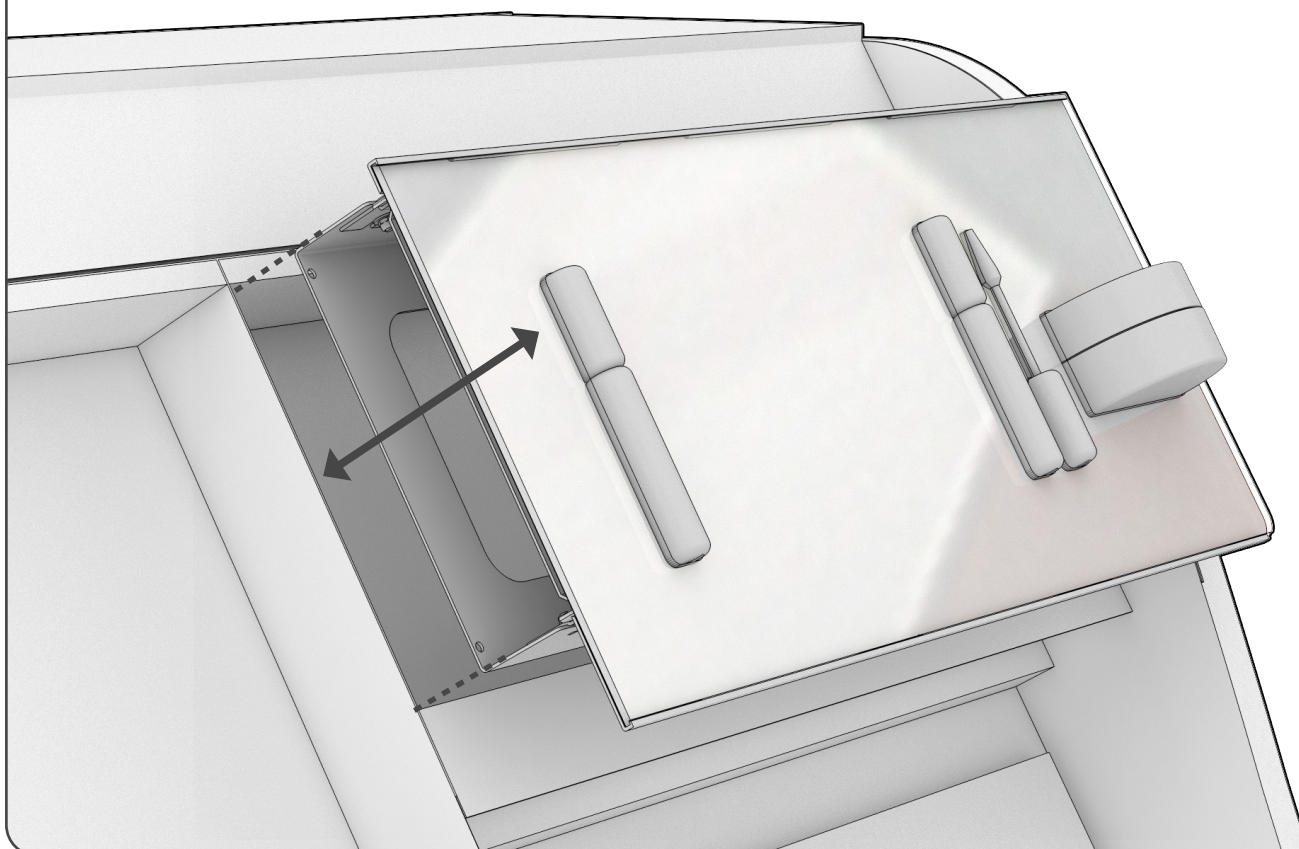


## How to install full toppers (page 1) and updates (page 3) in the structure of gondola, retailer format and colour studio



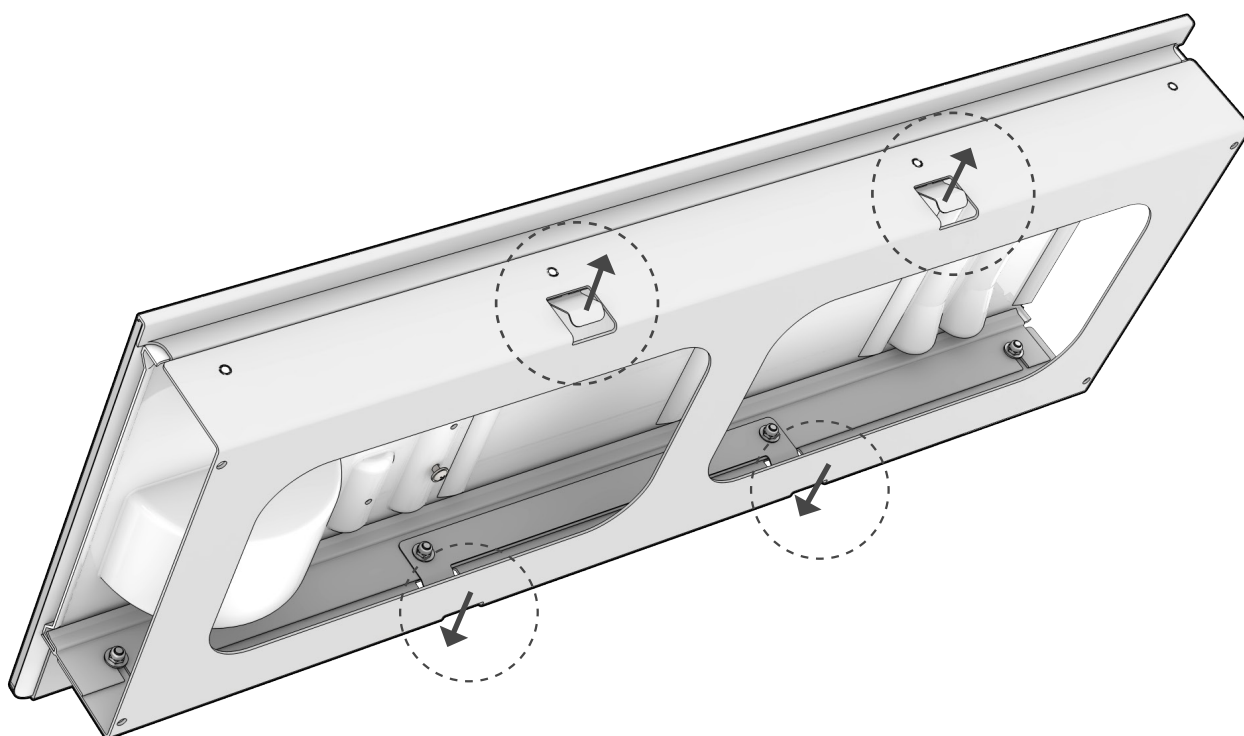
### How to place/remove the topper in the structure

*Push the grid into the structure to install, pull the grid out to remove.*



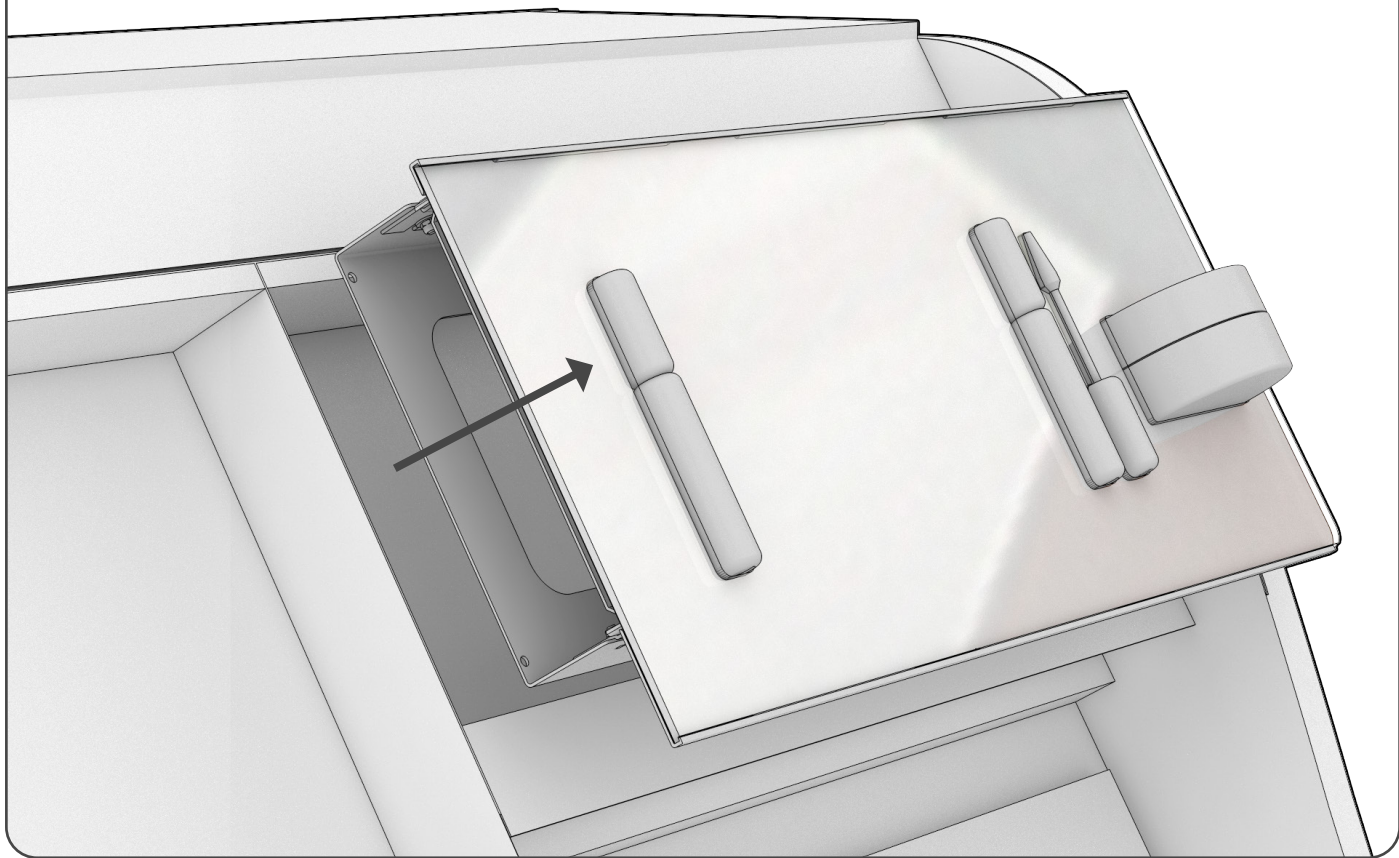
## How to adjust the insertion

*Press to bend the metal tabs to adjust in the structure if necessary.*

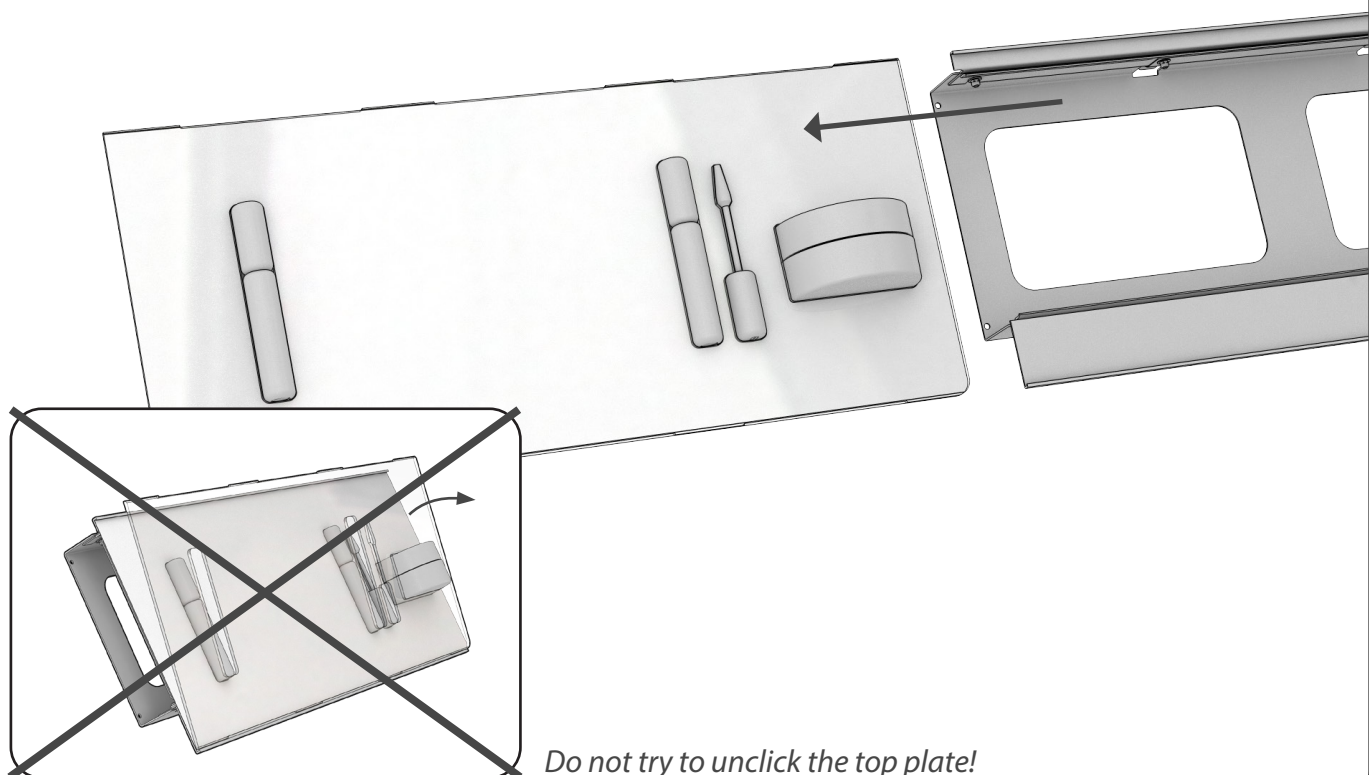


## How to install updates (including clear plate, vacform and visual)

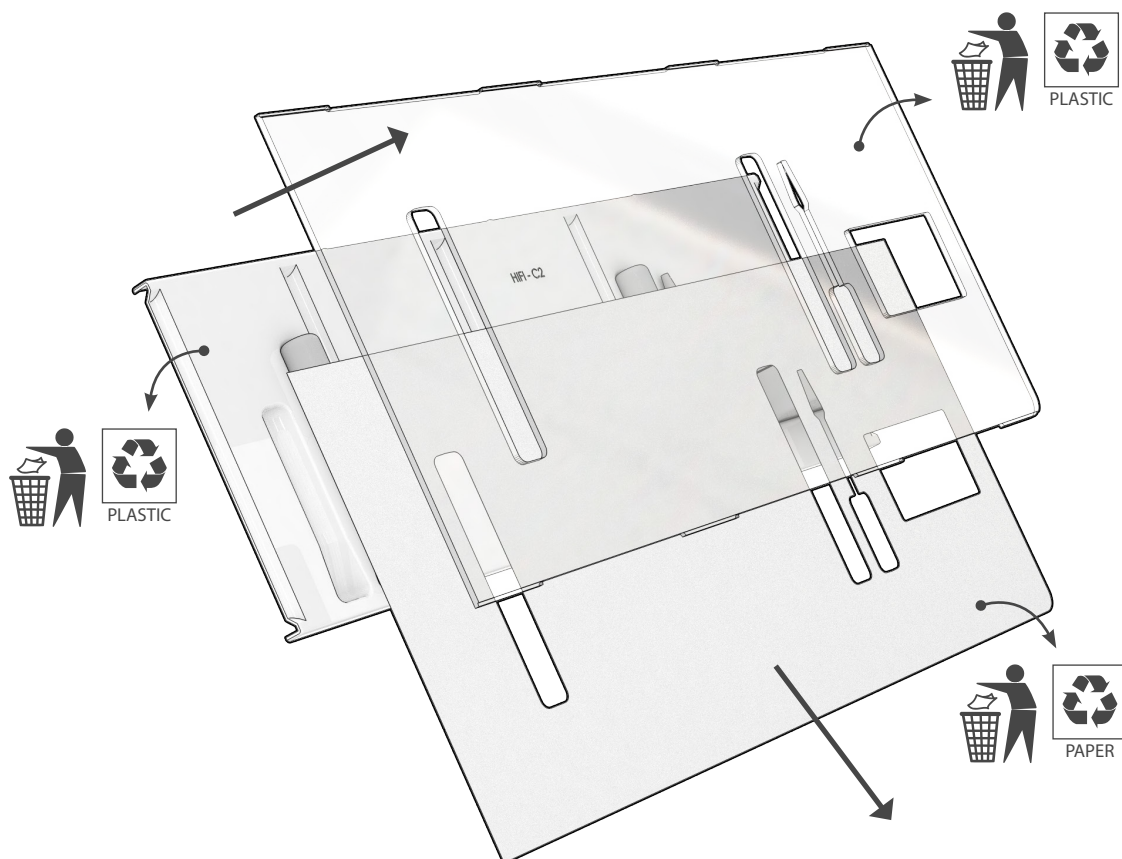
- 1** Pull the grid out.



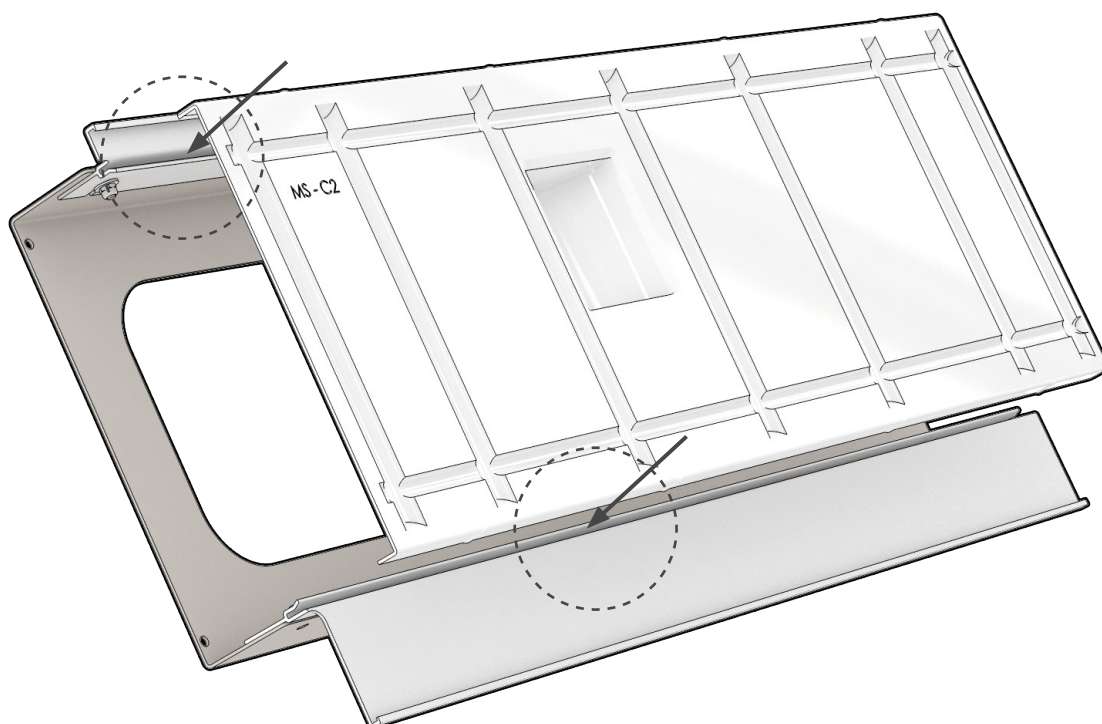
- 2** Slide the components out of the metal base.



- 3** Lift the clear template/vacform and visual and sort them in the proper bin

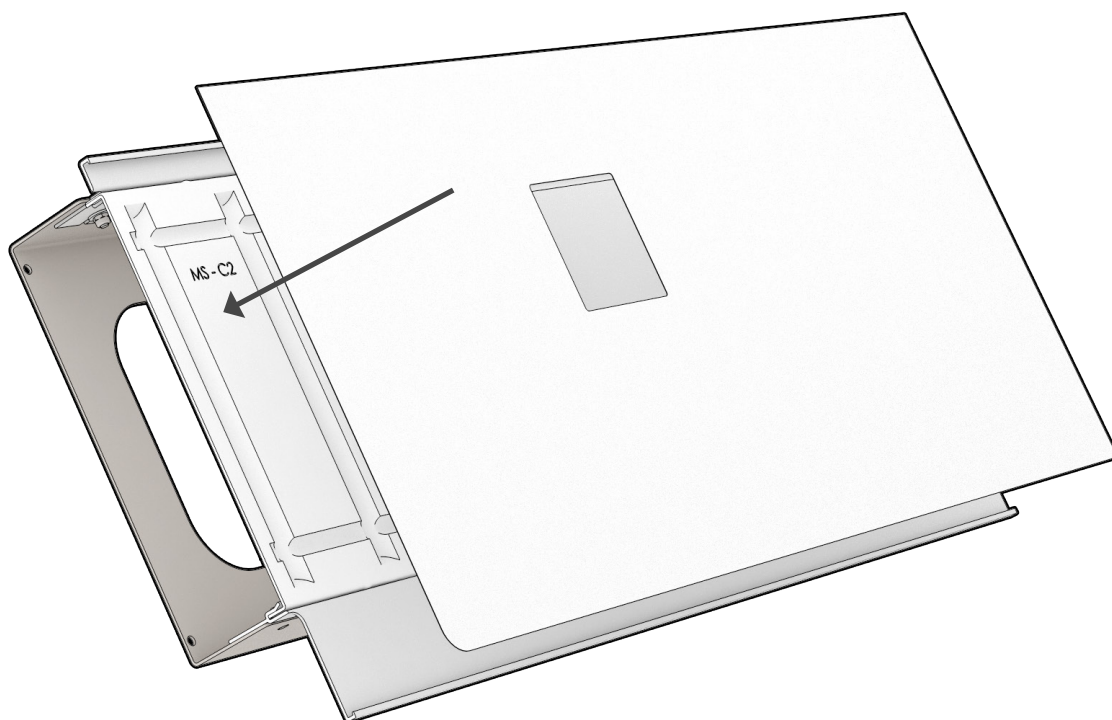


- 4** Insert the **New** vacform into the profile.

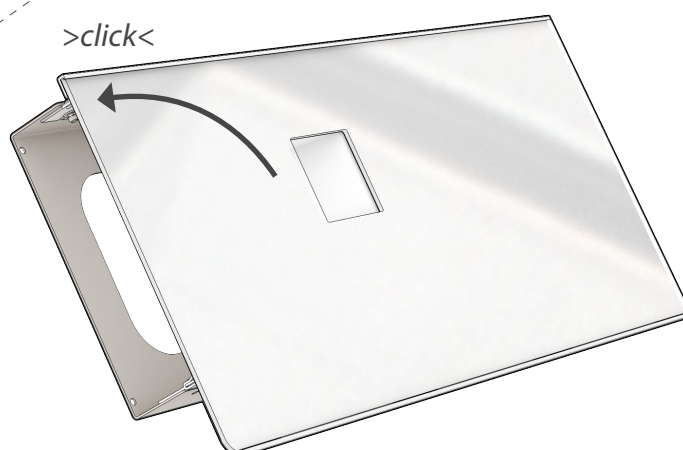
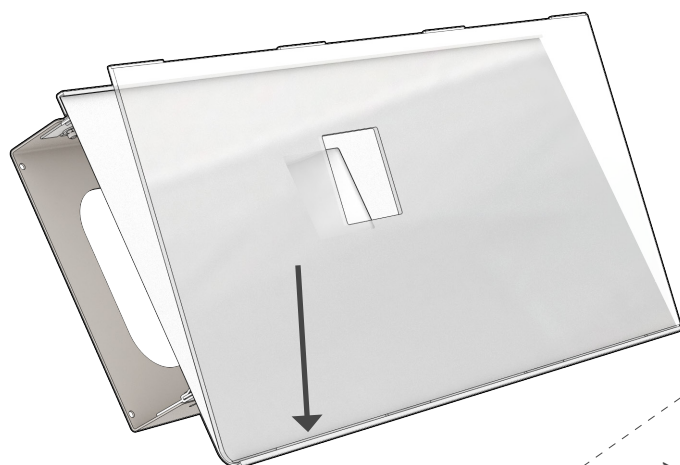




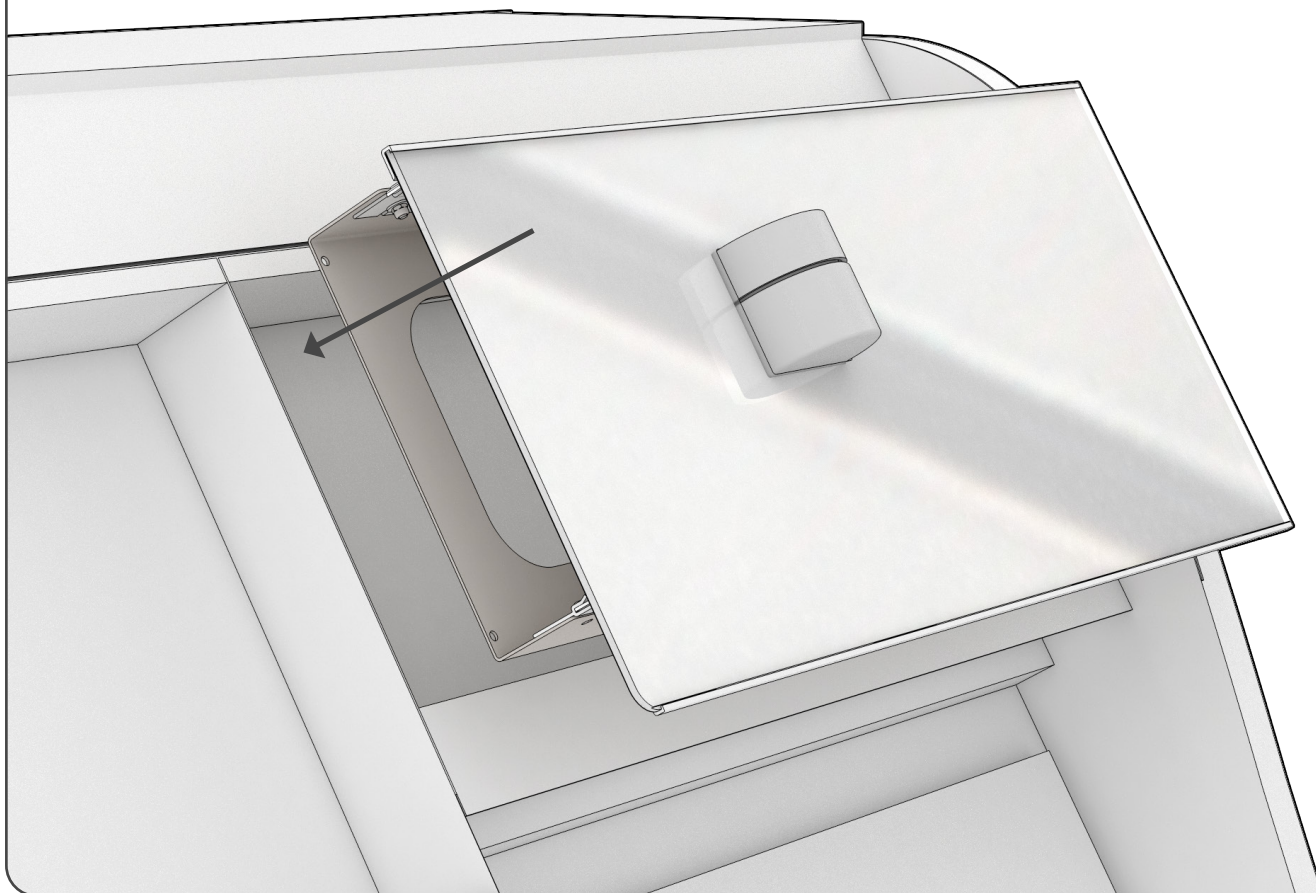
- 5** Place the **New** visual on top of the grid.



- 6** Place the **New** transparent cover on top of the grid.



**7** *Place the complete grid into the structure.*



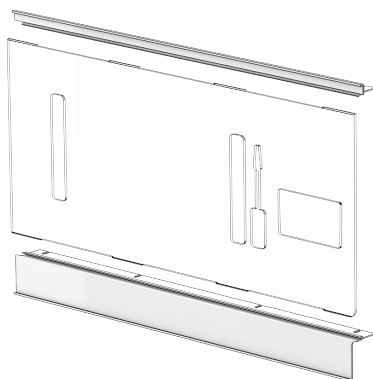
## Disposal instruction

### NOMENCLATURE

#### *Generic module*

PMMA  
PS  
PAPER  
METAL

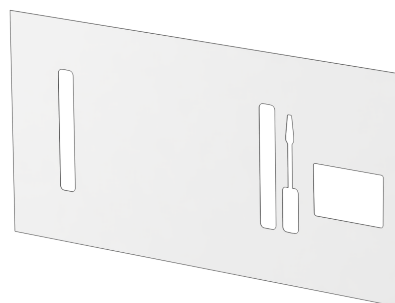
clear PMMA:



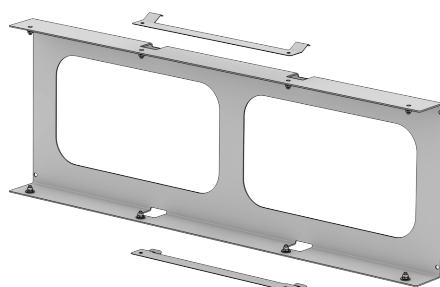
white PS:



PAPER:



white METAL:



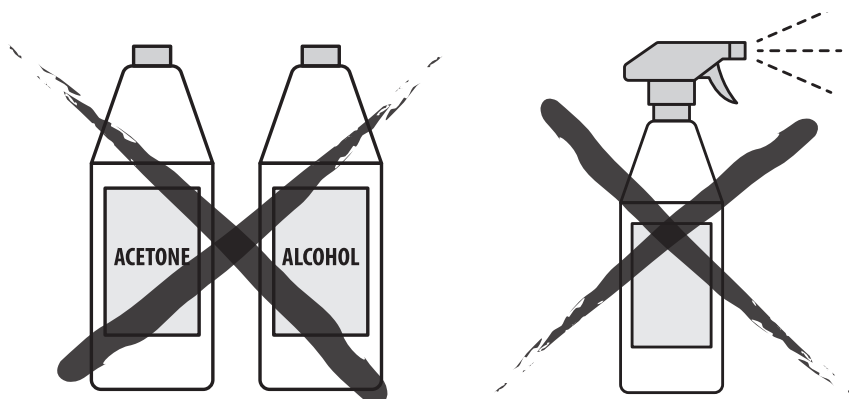
## Cleaning your unit

It is essential that the unit is regularly cleaned.

---

### DO NOT USE:

- Cleaning spray!
- Window cleaner!
- Household cleaner!
- Aerosol spray!
- Solvent!
- Alcohol!
- Ammonia!
- Acetone!
- Abrasive!



### SAFE TO USE:

- Microfiber cloth
- Soapy solution (dishwashing liquid diluted in water) lightly applied to cloth

